

51/106

# A PLANNED UNIT DEVELOPMENT PLAT NO. 4 OF BAY WINDS P.U.D.

106

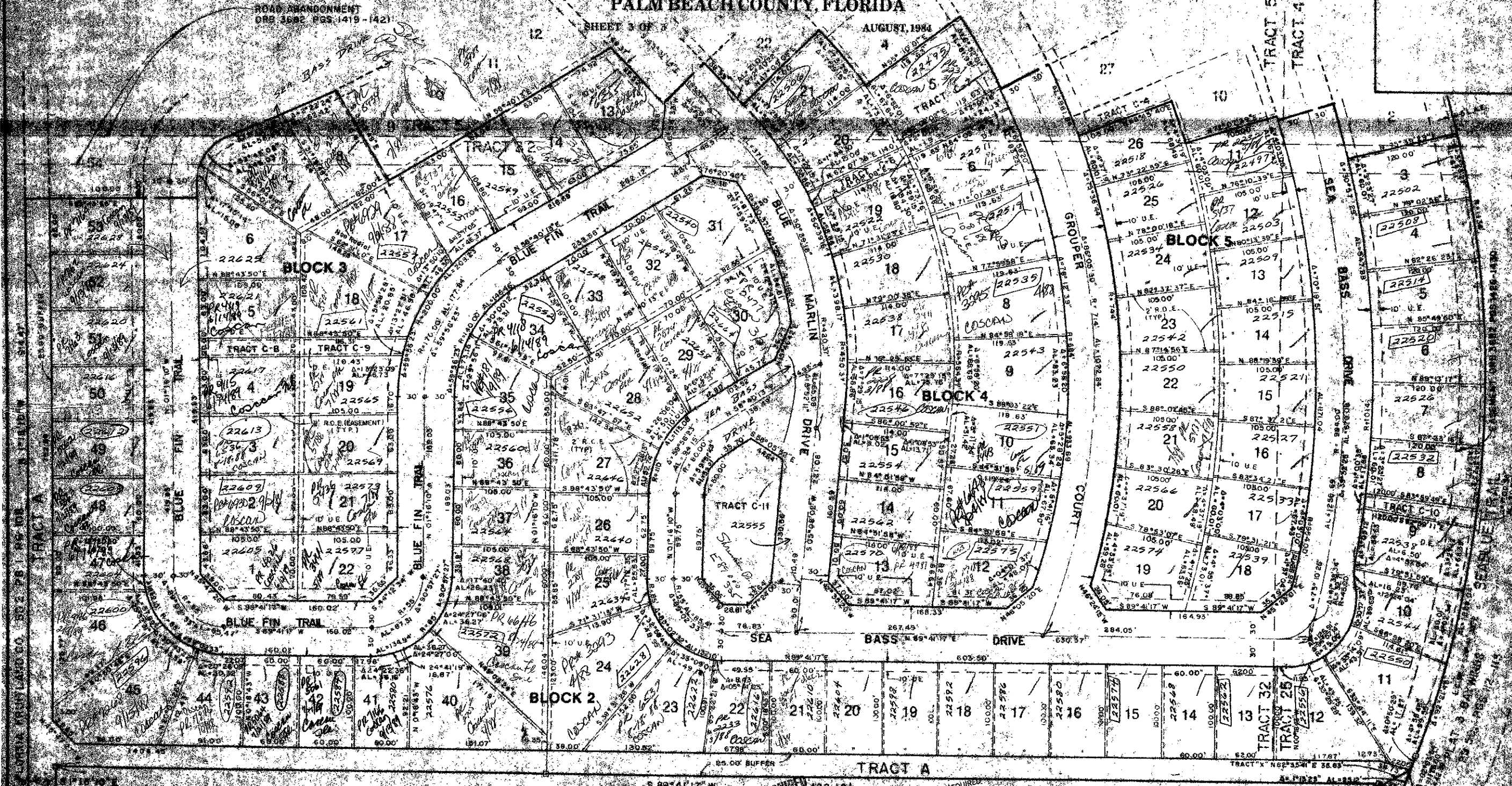
BEING A SUBDIVISION OF LAND IN SECTION  
27, TOWNSHIP 47 SOUTH, RANGE 41 EAST BEING A  
REPLAT OF PORTIONS OF TRACTS 4, 5, 6, 25, 26, & 32  
FLORIDA FRUIT LANDS COMPANY'S SUBDIVISION  
NO. 2 (P.B. 1, PG. 102)

PALM BEACH COUNTY, FLORIDA

ROAD ABANDONMENT  
DRB 3692 PGS. 1419-1421

SHEET 3 OF 7

AUGUST, 1984



DRAWING NUMBER

DRAWING NUMBER

DRAWING NUMBER

FLORIDA FRUITLANDS CO  
SD 2, PB 1, PG 108

Subdivision of Bay Winds P.U.D.  
BOOK 51 PAGE 106  
PLANNED UNIT DEVELOPMENT  
NO. 4 OF BAY WINDS P.U.D.  
ZIP CODE 33408  
PREPARED BY: [Signature]

GRAPHIC SCALE  
1" = 50'

ROBERT E. OWEN & ASSOCIATES, INC.  
ENGINEERS - PLANNERS - SURVEYORS  
WEST PALM BEACH  
FLORIDA

PLAT NO. 4  
OF  
BAY WINDS P.U.D.

51/106

0201-003

SIDEWALK REQUIRED

TRACT 31  
TRACT 26  
DUPLICATE  
PLAT 3/15/88